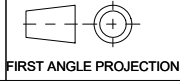


A2 INSTALLATION DRAWING

If this document is printed in hardcopy, it is for information use only and therefore is not subject to updating controls. Always refer to viewer for latest issue.



THIS DRAWING IS CONFIDENTIAL AND IS SUPPLIED ON THE EXPRESS CONDITION THAT IT SHALL NOT BE LOANED OR COPIED OR DISCLOSED TO ANY OTHER PERSON OR USED FOR ANY OTHER PURPOSE WITHOUT THE WRITTEN CONSENT OF AP RACING LTD.

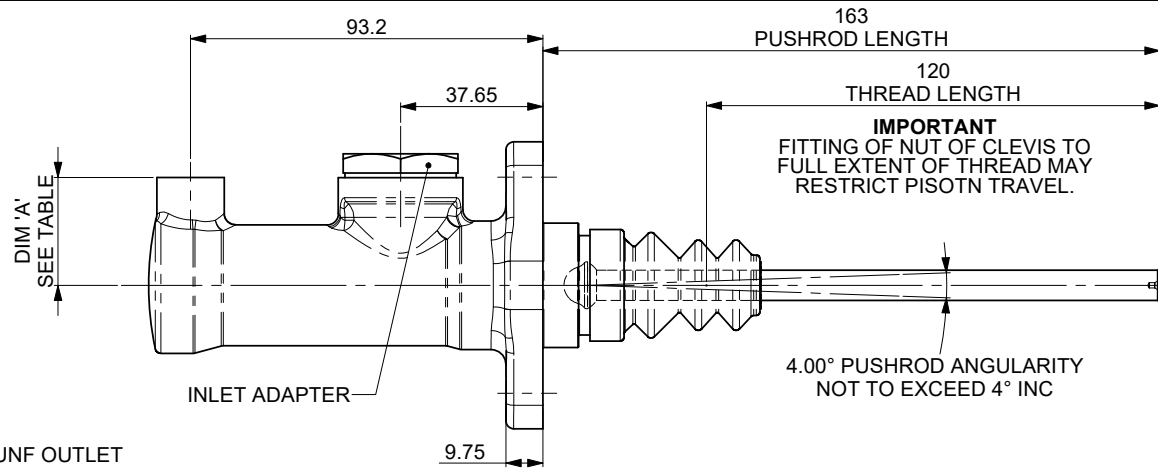
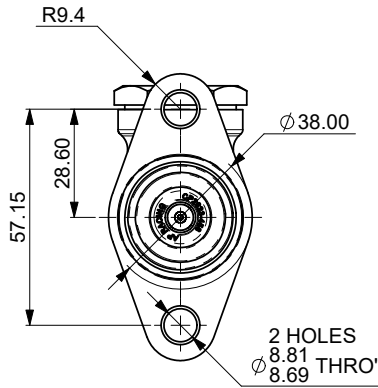


AP Racing
Wheler Road
Coventry
CV3 4LB

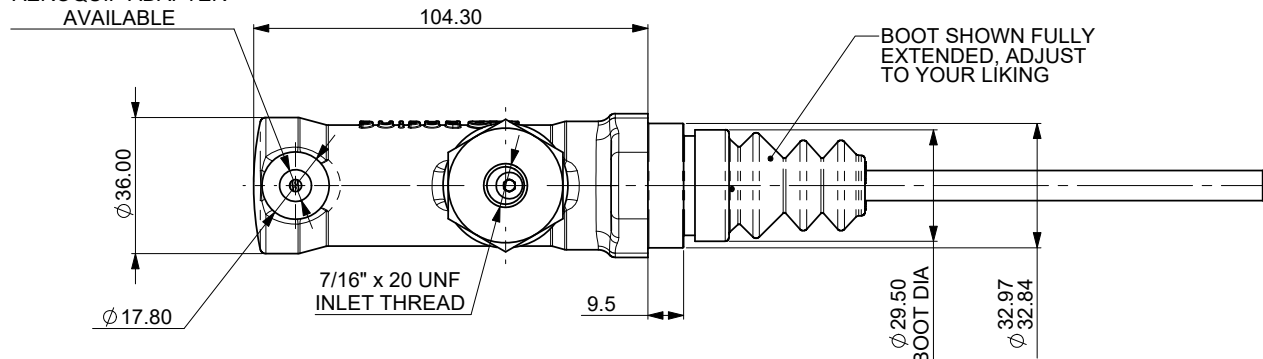
Tel: +44 024 7663 9595
Fax: +44 024 7663 9599
e-mail: sales@apracing.co.uk
Web site: http://www.apracing.com

© AP Racing Ltd. 2016

Issue No.	Date & No.	Alterations	
		Particulars	Zone
01	05/10/16 B7630	FIRST ISSUE	CH
02	18/12/17 B7801	CP9093-905 ADDED	CH
03	18/04/23 RAC23506	INLET ADAPTER KIT PART NUMBER CP2323-30 WAS CP4623-2	E7
		INLET ADAPTER KIT PART NUMBER CP2323-41 WAS CP4623-3.	E9



3/8" x 24 UNF OUTLET AEROQUIP ADAPTER AVAILABLE



GENERAL DESCRIPTION:
CENTRE VALVE MASTER CYLINDER FOR USE IN ABS AND HIGH PRESSURE APPLICATIONS. CP9093 MASTER CYLINDERS ARE SUPPLIED WITH 7/16" x 20 UNF THREADED INLETS.

AVERAGE WEIGHT.....370g
FULL STROKE.....30mm
TRAVEL TO CUT-OFF SHORT.....0.68-1.09mm (0.027"-0.043")

THREADS
INLET.....7/16" x 20 UNF
OUTLET.....3/8" x 24 UNF
BODY MATERIAL.....ALUMINIUM ALLOY
TYPICAL APPLICATIONS.....ABS

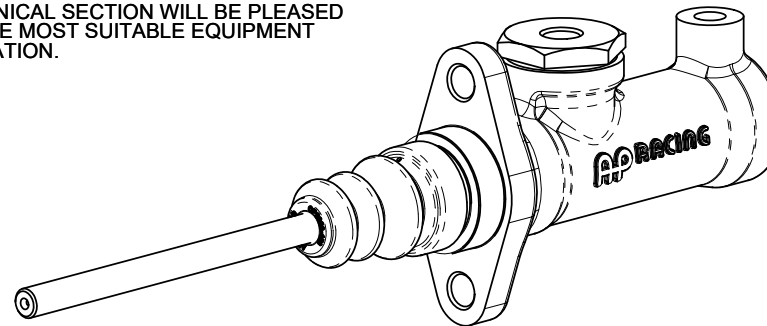
SEE SHEET 3 FOR PUSHROD DETAILS AND INLET OPTIONS.

AVAILABLE SIZES OF CYLINDER					
PART NUMBER	BORE SIZE	DIM 'A'	SHEET No.	TIE WRAP	REPAR KIT
CP9093-90	Ø15.9 (5/8")	25.40	SHEET 1	BLACK	CP7198-90RK
CP9093-905	Ø16.8	25.9		BLACK & YELLOW	CP7198-905RK
CP9093-91	Ø17.8 (0.70")	26.4		BLUE	CP7198-91RK
CP9093-92	Ø19.1 (3/4")	27.0		GREEN	CP7198-92RK
CP9093-93	Ø20.6 (13/16")	27.8		ORANGE	CP7198-93RK
CP9093-94	Ø22.2 (7/8")	28.6		RED	CP7198-94RK
CP9093-95	Ø23.8 (15/16")	29.4	SHEET 2	WHITE	CP7198-95RK
CP9093-96	Ø25.4 (1.0")	30.2		YELLOW	CP7198-96RK

ORDERING

WHEN ORDERING PLEASE STATE WHICH PUSHROD THREAD TYPE YOU REQUIRE, e.g.
CP9093-90PRM163 - METRIC - M8x1.25
CP9093-90PRT163 - IMPERIAL - 5/16" UNF
PLEASE ALSO STATE WHICH INLET TYPE YOU REQUIRE.

AP RACING TECHNICAL SECTION WILL BE PLEASED TO ADVISE ON THE MOST SUITABLE EQUIPMENT FOR ANY APPLICATION.



SCALE 1:1 SHEET 1 OF 3

DRAWN C Homeyard

APPROVED

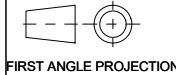
DERIVED FROM CP7198-1CD

TITLE
30.0mm STROKE PUSH TYPE
MASTER CYLINDER

DRG NO. CP9093-1CD

A2 INSTALLATION DRAWING

If this document is printed in hardcopy, it is for information use only and therefore is not subject to updating controls. Always refer to viewer for latest issue.



THIS DRAWING IS CONFIDENTIAL AND IS SUPPLIED ON THE EXPRESS CONDITION THAT IT SHALL NOT BE LOANED OR COPIED OR DISCLOSED TO ANY OTHER PERSON OR USED FOR ANY OTHER PURPOSE WITHOUT THE WRITTEN CONSENT OF AP RACING LTD.

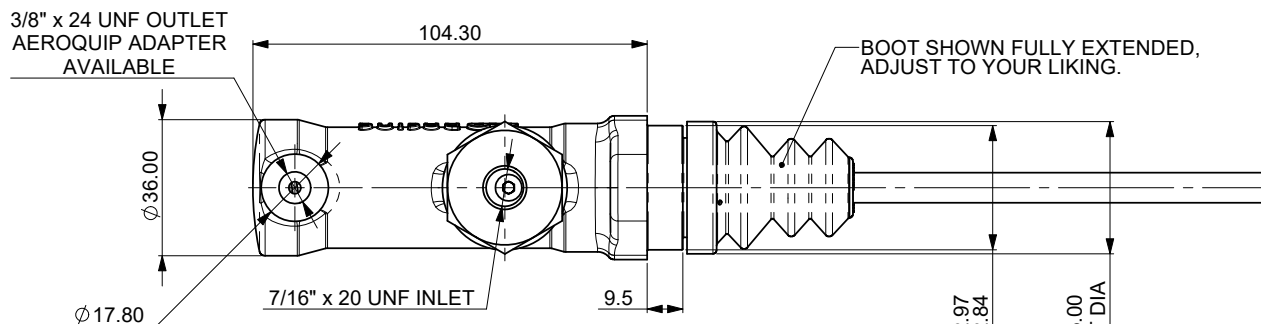
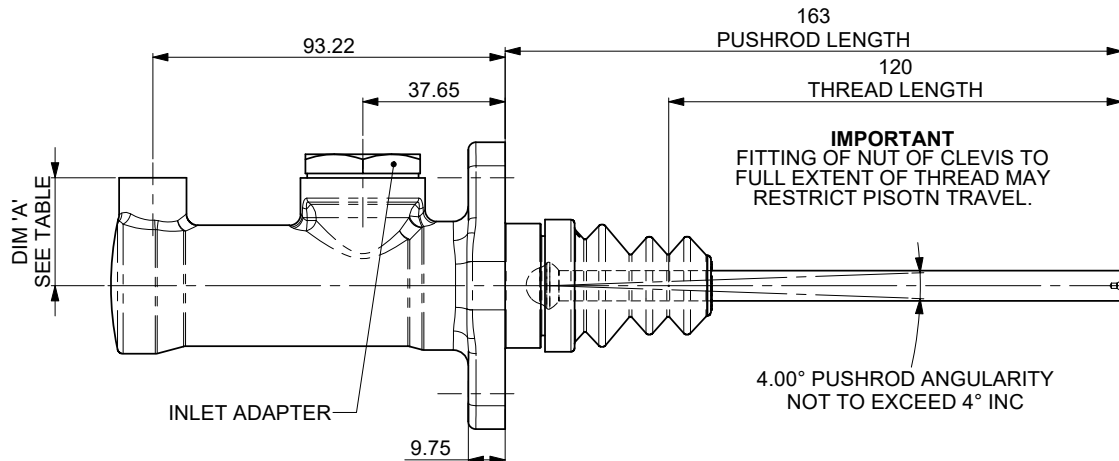
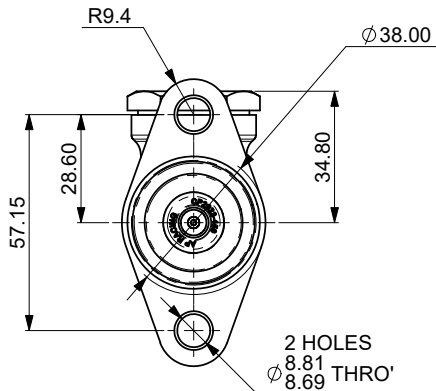


AP Racing
Wheler Road
Coventry
CV3 4LB

Tel: +44 024 7663 9595
Fax: +44 024 7663 9559
e-mail: sales@apracings.co.uk
Web site: http://www.apracings.com

© AP Racing Ltd. 2016

Issue No.	Date & No.	Alterations Particulars	Zone	Initials
-	-	SEE SHEET 1 FOR ISSUE INFORMATION.	-	-



GENERAL DESCRIPTION:

CENTRE VALVE MASTER CYLINDER FOR USE IN ABS AND HIGH PRESSURE APPLICATIONS. CP7198 MASTER CYLINDERS ARE SUPPLIED WITH M12x1.0 THREADED INLETS.

AVERAGE WEIGHT.....370g
FULL STROKE.....30mm
TRAVEL TO CUT-OFF
SHORT.....0.68-1.09mm
(0.027"-0.043")

THREADS
INLET.....7/16" x 20 UNF
OUTLET.....3/8" x 24 UNF
BODY MATERIAL.....ALUMINIUM ALLOY
TYPICAL APPLICATIONS.....ABS

SEE SHEET 3 FOR PUSHROD DETAILS AND INLET OPTIONS

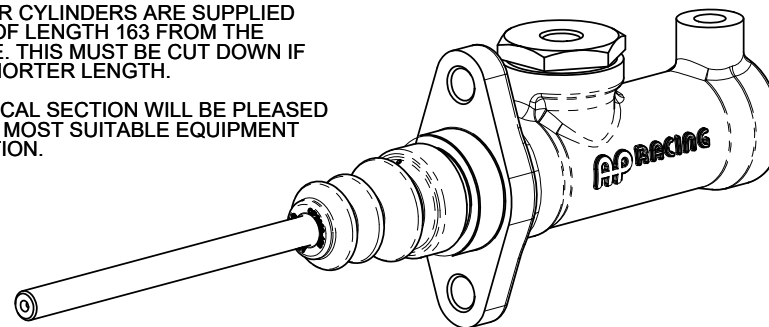
AVAILABLE SIZES OF CYLINDER				
PART NUMBER	BORE SIZE	DIM 'A'	TIE WRAP	REPAR KIT
CP9093-95	Ø23.8 (15/16")	29.4	WHITE	CP7198-95RK
CP9093-96	Ø25.4 (1.0")	30.2	YELLOW	CP7198-96RK

ORDERING

WHEN ORDERING PLEASE STATE WHICH PUSHROD THREAD TYPE YOU REQUIRE, e.g.
CP9093-90PRM163 - METRIC - M8x1.25
CP9093-90PRT163 - IMPERIAL - 5/16" UNF
PLEASE ALSO STATE WHICH INLET TYPE YOU REQUIRE.

ALL CP9093 MASTER CYLINDERS ARE SUPPLIED WITH A PUSHROD OF LENGTH 163 FROM THE MOUNTING FLANGE. THIS MUST BE CUT DOWN IF YOU REQUIRE A SHORTER LENGTH.

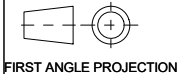
AP RACING TECHNICAL SECTION WILL BE PLEASED TO ADVISE ON THE MOST SUITABLE EQUIPMENT FOR ANY APPLICATION.



SCALE 1:1	SHEET 2 OF 3
DRAWN	C Homeyard
APPROVED	
DERIVED FROM	CP7198-1CD
TITLE	30.0mm STROKE PUSH TYPE MASTER CYLINDER
DRG NO.	CP9093-1CD

A2 INSTALLATION DRAWING

If this document is printed in hardcopy, it is for information use only and therefore is not subject to updating controls. Always refer to viewer for latest issue.



THIS DRAWING IS CONFIDENTIAL AND IS SUPPLIED ON THE EXPRESS CONDITION THAT IT SHALL NOT BE LOANED OR COPIED OR DISCLOSED TO ANY OTHER PERSON OR USED FOR ANY OTHER PURPOSE WITHOUT THE WRITTEN CONSENT OF AP RACING LTD.



AP Racing
Wheler Road
Coventry
CV3 4LB

Tel: +44 024 7663 9595
Fax: +44 024 7663 9559
e-mail: sales@ap racing.co.uk
Web site: http://www.ap racing.com

© AP Racing Ltd. 2016

Issue No.		Alterations		Zone	Initials	
Date & No.	Particulars					
-	-	SEE SHEET 1 FOR ISSUE INFORMATION.			-	-

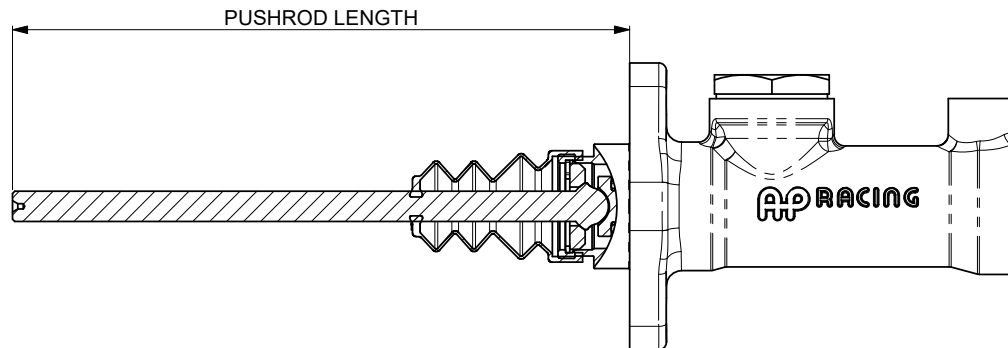
PUSHROD
CP9093 MASTER CYLINDERS ARE SUPPLIED WITH A PUSHROD LENGTH OF 163mm. CUSTOMERS SHOULD CUT THE PUSHROD DOWN TO THE REQUIRED SIZE FOR THEIR ASSEMBLY.

PUSHROD TYPES:

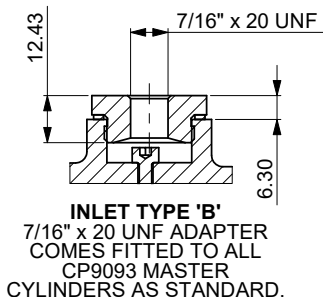
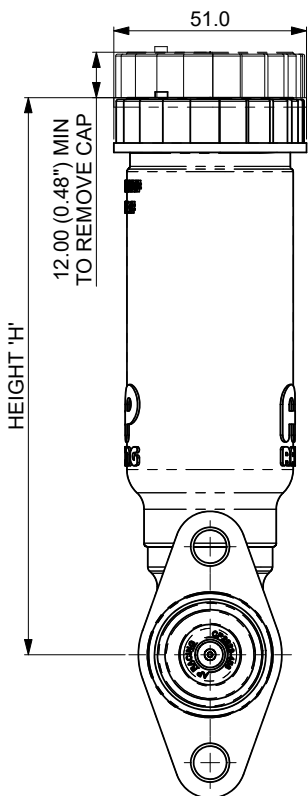
- PRT - PUSH ROD THREADED 5/16" UNF
- PRM - PUSH ROD THREADED M8x1.25

PUSHROD LENGTHS ARE MEASURED FROM THE MOUNTING FLANGE AS SHOWN.

PUSHROD EXTENSIONS THAT GIVE A TOTAL LENGTH OF OVER 200mm ARE NOT RECOMMENDED. IT IS THE CUSTOMERS RESPONSIBILITY TO CHECK SUITABILITY OF PUSHROD AND EXTENTION PIECES TO TAKE APPLIED LOADS.



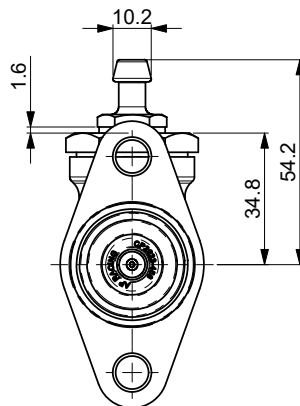
IMPORTANT NOTE
CP9093 MASTER CYLINDERS ARE INDIVIDUALLY SHIMMED DURING ASSEMBLY TO MINIMISE FREE PLAY. THEREFORE PUSHRODS SHOULD NOT BE SWITCHED BETWEEN INDIVIDUAL MASTER CYLINDER ASSEMBLIES.



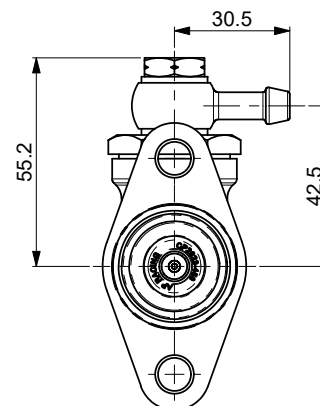
INLET TYPE 'C'
TO FIT CP4709 TYPE RESEVOIRS THE INLET ADAPTER AND COPPER GASKET ARE TO BE REMOVED. FITTING INSTRUCTIONS SUPPLIED WITH RESEVOIR.

RESEVOIR PART No.	HEIGHT 'H' mm (in)	DIA 'E' mm (in)	VOLUME cm ³ (in ³)
CP4709-10	198 (7.80")	51 (2.0")	183 (11.1")
CP4709-11	148 (5.83")		123 (7.5")
CP4709-12	108 (4.25")		75 (4.5")

OTHER RESEVOIR OPTIONS AVAILABLE, SEE AP RACING HYDRAULIC ACTUATION CATALOGUE.



INLET TYPE 'A'
SELECT MASTER CYLINDER WITH INLET TYPE 'B', PLUS INLET ADAPTER KIT PART NUMBER CP2623-30.



INLET TYPE 'D'
SELECT MASTER CYLINDER WITH INLET TYPE 'B', PLUS INLET ADAPTER KIT PART NUMBER CP2623-41.

SCALE 1:1	SHEET 3 OF 3
DRAWN	C Homeyard
APPROVED	
DERIVED FROM	CP7198-1CD
TITLE 30.0mm STROKE PUSH TYPE MASTER CYLINDER	
DRG NO.	CP9093-1CD